



\$ 1,515,000



525 Water St SW Unit 420, Washington, DC 20024

- » Beds: 3 | Baths: 3 Full
- » MLS #: DCDC2089630
- » Condominium | 1,724 ft²
- » Open Floor Plan
- » 3 Spacious bedrooms & 3 full bathrooms
- » More Info: [525WaterStSWUnit420.IsForSale.com](https://www.525WaterStSWUnit420.IsForSale.com)



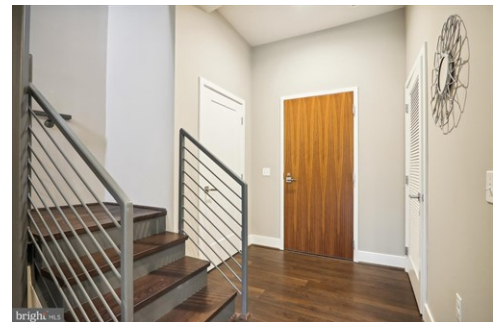
brigh MLS

Copyright © TruPlace, Inc.



brigh MLS

Copyright © TruPlace, Inc.



Syreeta Saunders-Keys, MBA
 (240) 842-0315 (Direct)
 (888) 860-7369 (Office)
Syreeta@keys2day.com
<https://www.keys2day.com>



eXp Realty
 8115 Maple Lawn Blvd.
 Suite 350
 Fulton, MD 20759
 (888) 860-7369

Rarely available 3 bedroom, 3 bathroom condo located just a few steps from The Wharf! Enjoy over 1700 square feet of luxury in the beautiful 525 Water Street SW building! Upon entering the building walk into the well appointed lobby with a concierge waiting to assist. Enjoy the use of amenities such as the exercise room, common space and recreation room. This modernly finished condo is an open concept that features a gorgeous kitchen with stainless steel Frigidaire Gallery and Bosch appliances, Porcelanosa tile, an island, quartz countertops, gas range and premium soft close cabinetry. This unit also boasts a partial water view, 9 foot ceilings, custom Hunter Douglas motorized shades, spacious bedrooms, plenty of room for entertainment in the family/living room area, upper level loft, huge walk-in custom closets, wall to ceiling windows, Juliet balconies and a large private rooftop terrace. No need to stress about parking because this lovely unit comes with 2 assigned full size parking spaces as a bonus. This building is conveniently located with easy access to all the shops and restaurants along the Wharf as well as a short ride to 395 to access Maryland and Virginia. High walkable (88), biking (88) and transit (79) scores on walkscore.com. Park nearby to walk your dog or to relax. What are you waiting for? View the virtual tour and schedule your appointment today! This gem won't last long!

